

# MOONEN

**Building Number 184:  
Moonen 94 Alu “*Nilo*”**

# SHIPYARDS

# MOONEN

## **Press Information: “*Nilo*”, Moonen’s First “94 Alu”**

**’s-Hertogenbosch, The Netherlands:** Moonen developed the “94 Alu,” the first model in its new “Fast Yacht Series,” out of the remarkable success of the Moonen 84 (of which eight have been sold since 2001). With its classic lines and popular four-cabin layout, the Moonen 84 inspired several clients to inquire if the shipyard could build a Moonen-quality yacht with similar accommodations, but lighter and capable of significantly higher speed.

René van der Velden designed the 28.94-meter “94 Alu” with a sportier flair than his Moonen 84, extending the horizontal lines for a more aerodynamic exterior. Naval architects Stolk Marimecs shaped a round-bilge, semi-displacement hull of about 110-ton displacement and moderately higher length/beam ratio, to reduce resistance at cruising speed, provide a softer ride at high speed, while assuring good seakeeping, manoeuvrability, and fuel economy—all qualities Moonen owners expect.

Moonen used the greater length of the “94 Alu” over the original 84-foot design to expand the forward accommodations, extend the swim platform, enlarge the lazaret, and create a longer engine room to include more powerful engines. *Nilo*, the first “94 Alu,” is powered by the new Caterpillar ACERT High-Performance engines. She is driven by Servogear Controllable-Pitch Propellers running in high-efficiency tunnels, and steered by custom-designed rudders also from Servogear. Tank tests during the design phase indicated a potential top speed of more than 27 knots, though the contract speed for *Nilo* is 25 knots. (The second “94 Alu” has fixed propellers in tunnels. Both have watertight bulkheads required for MCA compliance, but only the second is MCA certified.)

Moonen’s advanced program of noise and vibration reduction assure silent running at all speeds for *Nilo* and her future sisters. Moonen is building the entire “Fast Yacht Series” in light, strong, corrosion-resistant Sealium, an aluminium alloy that has achieved wide application in aerospace, shipbuilding, and commercial land construction, and which is conveniently cut, bent, and welded using the same methods as the more common 5083 alloys.

The interior styling of *Nilo* has been created by Art-Line, which also styled the most recent Moonen 84s. Moonen has under development larger and smaller “Alu” models. A Moonen “99 Alu” (an extended version of the “94 Alu”) is already on order.

You are cordially invited to board her at the Cannes and Monaco shows, to see how the leading builder of “pocket-size superyachts” blends reliability, luxury, silence, and speed into one exquisite form.

# SHIPYARDS

# MOONEN

## Building Number 184: 1<sup>st</sup> Moonen 94 Alu “Nilo”

### General

#### Dimensions:

Length over all	ca. 28.70 m
Length on waterline	ca. 25.25 m
Beam moulded	ca. 6.55 m
Beam maximum	ca. 6.80 m
Draught max.	ca. 1.80 m
Displacement	ca. 83.0 ton

#### Ship type:

Hull	Round bilge semi-displacement hull
Stern	Transom stern with bathing platform
Keel	Duct keel
Tanks	Double-bottom tanks integrated into the hull

#### Construction:

Material of hull plating	Aluminium
Material of superstructure	Aluminium

#### Tank Capacities:

Fuel	ca. 17.000 ltr
Freshwater	ca. 3.000 ltr
Blackwater	ca. 1500 ltr
Grey water	ca. 1500 ltr

#### Performance:

With twin <b>CATERPILLAR</b> engines C32ACERT, 1343kW at 2300 rpm	
Max. speed	ca. 26.5 Kn at 10% load.
Continuous speed	ca. 18.5 Kn at 50% load.
Range at economical speed	ca. 2.500 Nm

**Design:** René van der Velden

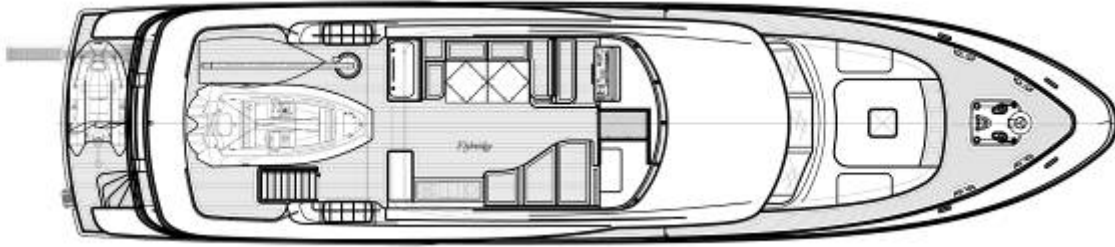
**Interior design:** ArtLine

**Naval Architecture:** Stolk Marimecs

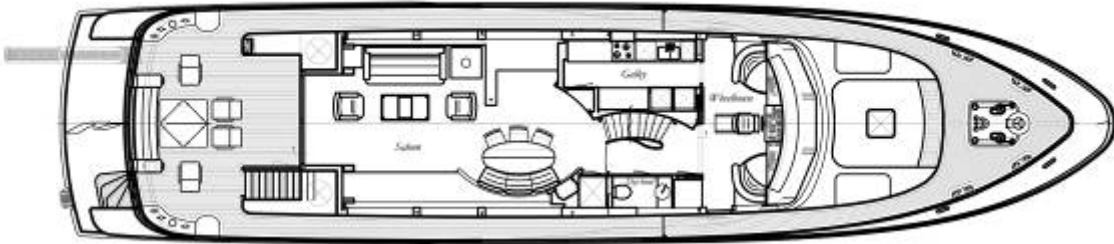
# SHIPYARDS

# MOONEN

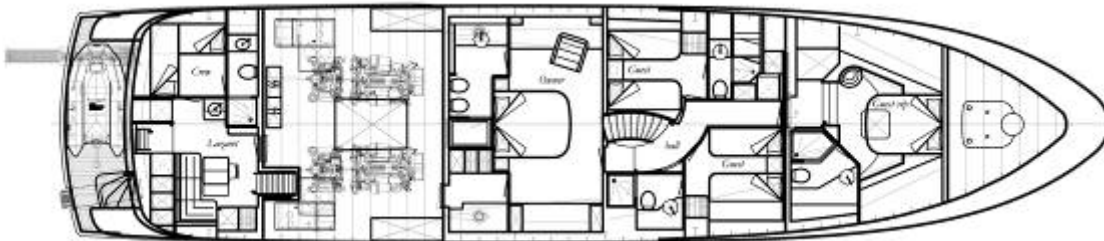
## Building Number 184: 1<sup>st</sup> Moonen 94 Alu “Nilo”



Flybridge Deck



Main Deck



Lower Deck

# SHIPYARDS

# MOONEN

**Building Number 184: 1<sup>st</sup> Moonen 94 Alu “Nilo”**



*Launching*



*Launching of Nilo: the Servogear Controllable-Pitch Propellers*

# SHIPYARDS

# MOONEN

**Building Number 184: 1<sup>st</sup> Moonen 94 Alu “Nilo”**



*The first sea trial in May 2007 in The Netherlands, we reached easily 26.6 knots at 10% condition and 26.1 knots at 50% condition!! Zero – 20 knots in 20 seconds and zero – top speed in 40 seconds. Crash-stop only 3.5 ships-lengths. Fuel consumption at 11 knots only 70 ltrs per hour (including generators) so range approx. 2500nm!!!*



# SHIPYARDS

# MOONEN

**Building Number 184: 1<sup>st</sup> Moonen 94 Alu “Nilo”**



*The first sea trail in May 2007 in The Netherlands*

# SHIPYARDS

# MOONEN

**Building Number 184: 1<sup>st</sup> Moonen 94 Alu “Nilo”**



*Main salon*



*Main salon*

# SHIPYARDS

# MOONEN

**Building Number 184: 1<sup>st</sup> Moonen 94 Alu “Nilo”**



*Main salon*



*Galley*

# SHIPYARDS

# MOONEN

**Building Number 184: 1<sup>st</sup> Moonen 94 Alu “Nilo”**



*Wheel house*



*Photos of lower deck will follow.*

# SHIPYARDS